

T115

Utility, Series 5
113 ps



Packed with features to help accomplish your goals

Take utilization to the next level with one of the largest TYM tractors. The T115 is equipped to tackle the toughest of jobs with maximized productivity.



1. Dual side mirrors



2. Powershift
transmission



3. Digital instrument
panel



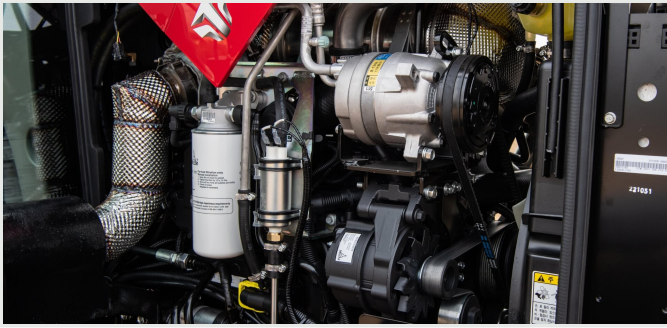
4. Battery shut-off
switch



5. LED interior
lighting



6. Side & rear LED
work lights



EU Stage V certified Deutz engine

Built with precision German engineering, Deutz engines offer high power and torque, even at low RPMs. Their longer lifespans and high reliability make them an ideal choice to boost productivity.



Comfort suspension seat

Comfort suspension seats provide excellent ride quality and minimize fatigue during long hours of operation.



6-port external rear remotes and hydraulic top link

2 separate remotes for the top link means that all 6 external rear remotes can be used to mount a variety of attachments. External top link buttons make attaching and detaching attachments easy.



Smart key with remote start

Start the tractor and control the rear hitch remotely with a touch of a button on the smart key.



Rear attachment control

Control the horizontal level, top link, and lower link control with switches mounted on the rear for easy installation and removal of various attachments.

L: Horizontal / lower link control

R: Top link / lower link control



LCD monitor & rear camera

The interior-mounted LCD monitor and the rear cameras provide a clear view of the rear attachment for added convenience.

Technical specifications

| ENGINE | |
|--------------------------------|-----------------------|
| Engine manufacturer | Deutz TCD 3.6 L4 |
| Type | Turbo charger |
| Gross engine power | 113 ps |
| PTO power | 109 ps 80 kW |
| Rated engine speed | 2200 rpm |
| No. of cylinders | 4 |
| Displacement | 221 cu. in. 3621 cc |
| Air cleaner | Dual dry |
| Alternator | 12V, 120A |
| Fuel system | CRDI |
| POWERTRAIN | |
| Transmission type | Power-shuttle |
| No. of speeds | F32 x R32 |
| Max. traveling speed | 23 mph 37 km/h |
| Brakes | Wet, Multi-disc |
| Steering | Hydrostatic |
| Clutch | Wet, multi-plate |
| CAPACITIES | |
| Fuel tank | 31.7 gal 120 L |
| Coolant | 4.4 gal 16.5 L |
| Crankcase | 4.2 gal 15.9 L |
| Transmission/Hydraulics system | 19.8 gal 75 L |
| Front axle | 4.6 gal 17.5 L |

| PTO | |
|---|-------------------------|
| PTO type | Independent |
| PTO control | Electric/Hydro |
| PTO rear | 540/750/1000 |
| HYDRAULIC SYSTEM | |
| Pump type | Gear pump |
| Implement flow | 14.2 gpm 53.7 lpm |
| Steering flow | 7.1 gpm 26.8 lpm |
| Total flow | 21.3 gpm 80.5 lpm |
| Category, 3-point hitch | Cat2 |
| Hitch lift capacity | 5328.6 lb 2417 kg |
| Hitch lift capacity at 24 inches behind link ends | 7623.6 lb 3458 kg |
| Lift control type | Position/Draft |
| No. of standard remote valves | 6 |
| DIMENSIONS & WEIGHTS | |
| Overall length with 3-point hitch | 175.2 in. 4450 mm |
| Overall width | 89.4 in. 2270 mm |
| Wheelbase | 93.7 in. 2380 mm |
| Height to top of ROPS | 112.2 in. 2850 mm |
| Min. ground clearance | 16.7 in. 425 mm |
| Min. turn radius with brakes | 143.7 in. 3650 mm |
| Min. turn radius without brakes | 162.2 in. 4120 mm |
| Weight with cab | 8940 lb 4055 kg |
| Min. turn radius without brakes | 162.2 in. 4120 mm |
| Track width | F: 1720 mm / R: 1650 mm |
| STANDARD TIRES | |
| Agricultural - Front | 13.6 - 24 |
| Agricultural - Rear | 18.4 - 34 |

LX110S Front-End Loader

Attachments

Engineered to lift higher and lift heavier materials, the TYM LX110S is optimized for superior material handling. Taking advantage of the power and performance of the TYM utility tractors, the LX110S is compatible with the T115.

| | |
|---------------|---------------------|
| Lift height | 141.7 in. / 3600 mm |
| Lift capacity | 4054 lb / 1839 kgf |
| Self leveling | Available |



| CAPACITIES & REACH | |
|--|--------------------------|
| Lift height | 141.7 in. 3600 mm |
| Max. lift height under level bucket | 131.5 in. 3340 mm |
| Clearance with bucket dumped | 104.3 in. 2648 mm |
| Reach at maximum lift height | 15.4 in. 392 mm |
| Max. dump angle | 80° |
| Reach with bucket on ground | 87 in. 2210 mm |
| Max. rollback angle | 45° |
| Digging depth | 6.8 in. 172 mm |
| Lift capacity | 4054 lb 1839 kgf |
| Breakout force at ground level, pivot points | 5908 lb 2680 kgf |
| Bucket rollback force at ground line | 6314 lb 2864 kgf |
| Self leveling | Available |
| Relief valve setting (Loader control valve) | 2916 psi 205 kg/sq. cm |

| DIMENSIONS & WEIGHTS | |
|--|-----------------------|
| Overall height in carry position | 72 in. 1830 mm |
| Depth of Attachment (to the back of the inner shell) | 22.8 in. 579 mm |
| Height of Attachment | 22.2 in. 563 mm |
| Length of Attachment (to pivot point) | 33.9 in. 862 mm |
| Weight of boom & quick attach mechanism (1) | 926 lb 420 kg |
| Weight of mounting frame (2) | 487 lb 221 kg |
| Weight of bucket (3) | 437 lb 198 kg |
| Loader total weight (1+2+3) | 1850 lb 839 kg |
| Lift cylinder | 3.0x1.6 in. 75x40 m |
| Bucket cylinder | 2.8x1.6 in. 70x40 m |
| Attachment used for specification | 87 in. 2200 mm |
| CYCLE TIMES | |
| Boom raising time | 4.8 sec |
| Boom lowering time | 3.3 sec |
| Bucket rollback time | 2.7 sec |
| Bucket dumping time | 4.0 sec |



Designed for your world

TYM creates tractors that bring together alluring form, advanced function and accessible value. Through Korean expertise in design, engineering and manufacturing, the company helps owners overcome every obstacle as they shape the world around them.

Headquartered in Korea with distribution across North America, Europe, and Asia, and assembly operations in the USA, TYM has been empowering customers for over 70 years.

www.tym.world