

T76

Compact Utility, Series 4
75 ps



Packed with features to help accomplish your goals

The T76 is the result of TYM's decades-long experience and the embodiment of TYM's philosophy on technology, design, and agriculture.



1. Tiger face front fascia



2. Battery shut-off switch



3. Electronic organ-type pedal



4. LED interior lighting



5. Side-rear LED lamp



6. External hitch control buttons



MYTYM telematics system

Through MYTYM's remote diagnostics service, check the location, work logs and status of your tractor in real time on your mobile device. (Available on select models only)



EU Stage V certified Deutz engine

Built with precision German engineering, Deutz engines offer high power and torque, even at low RPMs. Their longer lifespans and high reliability make them an ideal choice to boost productivity.



Wireless charger, cup warmer & cooler

The wireless smartphone charger and cup warmer and cooler provide comfort during long hours of work. (Available on select models only)



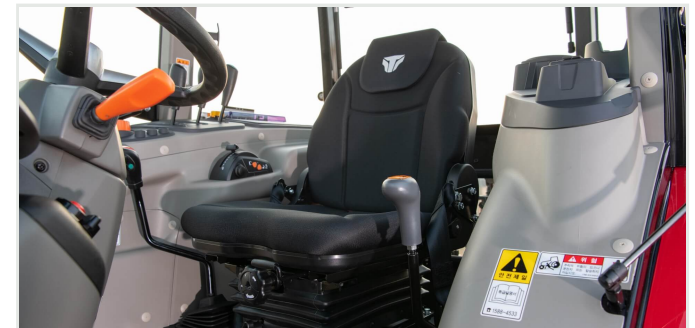
6-port external rear remotes and hydraulic top link

2 separate remotes for the top link means that all 6 external rear remotes can be used to mount a variety of attachments. External top link buttons make attaching and detaching attachments easy. (Available on select models only)



BOSCH electronic hydraulic control system

The German-engineered BOSCH electronic hydraulic control system allows for easy control of the attachments and hydraulic functions like quick turns, horizontal auto-level, and sensitivity controls. (Available on select models only)



Comfortable suspension seat

Comfort suspension seats provide excellent ride quality and minimizes fatigue during long hours of operation.

Technical specifications

ENGINE	
Engine manufacturer	Deutz TCD2.9L4
Type	Turbo
Gross engine power	75 ps
PTO power	68 ps 50 kW
Rated engine speed	2200 rpm
No. of cylinders	4
Displacement	178.4 cu. in. 2925 cc
Air cleaner	Dry
Alternator	12V, 95A
Fuel system	CRDI
POWERTRAIN	
Transmission type	Power shuttle
No. of speeds	F16 x R16
Max. traveling speed	20.4 mph 32.9 km/h
Brakes	Wet Disc
Steering	Hydrostatic
Clutch	Dry Single Plate
CAPACITIES	
Fuel tank	23.8 gal 90 L
Coolant	10.6 qt 10 L
Crankcase	8.5 qt 8 L
Transmission/Hydraulics system	18 gal 68 L
Front axle	4.3 gal 16.4 L

PTO	
PTO type	Independent
PTO control	Electric/Hydro
PTO rear	540/750/1000
HYDRAULIC SYSTEM	
Pump type	Gear Pump
Implement flow	10.3 gpm 39.1 lpm
Steering flow	5.8 gpm 22 lpm
Total flow	16.1 gpm 61.1 lpm
Category, 3-point hitch	Cat2
Hitch lift capacity	5154.4 lb 2338 kg
Hitch lift capacity at 24 inches behind link ends	3478.9 lb 1578 kg
Lift control type	Position/Draft
No. of standard remote valves	6
DIMENSIONS & WEIGHTS	
Overall length with 3-point hitch	154.3 in. 3920 mm
Overall width	76.4 in. 1940 mm
Wheelbase	86.2 in. 2190 mm
Height to top of ROPS	106.7 in. 2710 mm
Min. ground clearance	17.3 in. 440 mm
Min. turn radius with brakes	145.7 in. 3700 mm
Min. turn radius without brakes	162.8 in. 4135 mm
Weight with cab	6316 lb 2865 kg
Track width	F: 1590 mm / R: 1510 mm
STANDARD TIRES	
R1 Agricultural - Front	11.2 - 24
R1 Agricultural - Rear	16.9 - 30

LX754 Front-End Loader

Attachments

The TYM LX754 front-end loader provides enhanced lift capabilities to the powerful line of TYM tractors. Compatible with the TX59, TX69, and TX76, the LX754 offers impressive lift height and capacity to help you accomplish heavy-duty tasks.

Lift height	124.8 in. / 3169 mm
Lift capacity	2820 lb / 1279 kgf
Self leveling	Available



CAPACITIES & REACH	
Lift height	124.8 in. 3169 mm
Max. lift height under level bucket	114.7 in. 2913 mm
Clearance with bucket dumped	89.4 in. 2270 mm
Reach at maximum lift height	9.7 in. 247 mm
Max. dump angle	75°
Reach with bucket on ground	82.7 in. 2100 mm
Max. rollback angle	49°
Digging depth	8.1 in. 205 mm
Lift capacity	2820 lb 1279 kgf
Breakout force at ground level, pivot points	4614 lb 2093 kgf
Bucket rollback force at ground line	3194 lb 1449 kgf
Self leveling	Available
Relief valve setting (Loader control valve)	2489 psi 175 kg/sq. cm

DIMENSIONS & WEIGHTS	
Overall height in carry position	75.2 in. 1910 mm
Depth of Attachment (to the back of the inner shell)	22.8 in. 579 mm
Height of Attachment	22.2 in. 563 mm
Length of Attachment (to pivot point)	33.9 in. 861 mm
Weight of boom & quick attach mechanism (1)	791 lb 359 kg
Weight of mounting frame (2)	600 lb 272 kg
Weight of bucket (3)	370 lb 168 kg
Loader total weight (1+2+3)	1761 lb 799 kg
Lift cylinder	2.8x1.6 in. 70x40 mm
Bucket cylinder	2.6x1.4 in. 65x35 mm
Attachment used for specification	72.0 in. 1830 mm
CYCLE TIMES	
Boom raising time	6.5 sec
Boom lowering time	4.7 sec
Bucket rollback time	3.5 sec
Bucket dumping time	4.5 sec

Upgrades for the Series 4, T76

Complement the capabilities of your TYM tractor with compatible accessories and options.

Accessories

Front counterweights



Options



Designed for your world

TYM creates tractors that bring together alluring form, advanced function and accessible value. Through Korean expertise in design, engineering and manufacturing, the company helps owners overcome every obstacle as they shape the world around them.

Headquartered in Korea with distribution across North America, Europe, and Asia, and assembly operations in the USA, TYM has been empowering customers for over 70 years.

www.tym.world