

K75E

Compact Utility, Series 4
73.9 ps



Packed with features to help accomplish your goals

The K75E features car-like comfort on top of its formidable performance specs. Equipped with a powerful 3.4 liter turbo engine rated at 75 horsepower, this is the most powerful tractor in its class.



1. Power shuttle



2. Hydraulic tilt / telescoping power steering



3. De-clutch



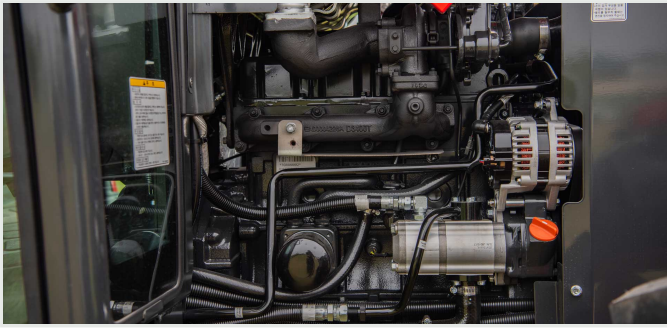
4. Rear external implement control



5. Electronic lift control



6. Multi-functional buttons



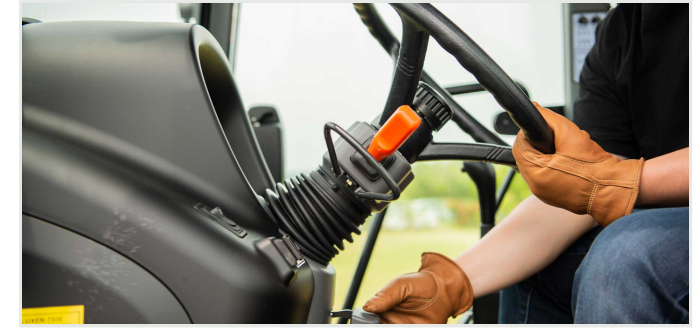
3.4L high-output TYM diesel engine

Equipped with the highest-capacity engine in its class, the K57E makes quick work of any task. What's more, this eco-friendly engine meets Stage-V emissions standards.



High-capacity fuel tank

High-capacity fuel tanks allow long operating times without refueling and improves engine fuel efficiency.



Tilt steering wheel

The tilt steering wheel allows the operator to adjust to their best driving position for greater comfort.



Multi-functional buttons

The PTO and the implement can be easily controlled with the multi-functional buttons. The operator can also control height, horizontal level, auto-level sensitivity, and Back-Up & Turn-Up functions.



Deluxe cabin with AC and heater

Standard AC and heater and helps operators work comfortably regardless of the season. It also increases the work efficiency by increasing visibility.



DPF Regeneration System (Electronic Exhaust Valve)

Lowest fuel consumption and efficiently regenerates the diesel particulate filter

Technical specifications

ENGINE	
Engine manufacturer	TYM D3400T
Type	Turbocharger
Gross engine power	73.9 ps
PTO power	63.9 ps 47 kW
Rated engine speed	2500 rpm
No. of cylinders	4
Displacement	208.02 cu. in. 3409 cc
Air cleaner	Dry element
Alternator	12V-70A
Fuel system	Direct Injection
POWERTRAIN	
Transmission type	Power Shuttle
No. of speeds	F16 x R16
Max. traveling speed	20.61 mph 33.18 km/h
Brakes	Wet Disc
Steering	Hydrostatic
Clutch	Wet Disc
CAPACITIES	
Fuel tank	23.77 gal 90 L
Coolant	9.08 qt 8.6 L
Crankcase	9.51 qt 9 L
Transmission/Hydraulics system	66.57 qt 63 L
Front axle	3.69 gal 14 L

PTO	
PTO type	Independent
PTO control	Electric/Hydro
PTO rear	540/750/1000 rpm
HYDRAULIC SYSTEM	
Pump type	Gear Pump
Implement flow	13.20 gpm 50 lpm
Steering flow	7.92 gpm 30 lpm
Total flow	21.13 gpm 80 lpm
Category, 3-point hitch	Cat 2
Hitch lift capacity	5235.97 lb 2375 kg
Hitch lift capacity at 24 inches behind link ends	3985.95 lb 1808 kg
Lift control type	Position,Draft,TBS
No. of standard remote valves	6
DIMENSIONS & WEIGHTS	
Overall length with 3-point hitch	144.09 in. 3660 mm
Overall width	74.40 in. 1890 mm
Wheelbase	86.61 in. 2200 mm
Height to top of ROPS	107.08 in. 2720 mm
Min. ground clearance	16.53 in. 420 mm
Min. turn radius with brakes	142.12 in. 3610 mm
Min. turn radius without brakes	178.34 in. 4530 mm
Track width	F: 1445 mm / R: 1440 mm
Weight with cab	6470.56 lb 2935 kg
STANDARD TIRES	
Agricultural - Front	11.2 - 24
Agricultural - Rear	16.9 - 30

KJL750E Front-End Loader

Attachments

The TYM KJL750E front-end loader raises the bar in material handling and productivity. Providing an impressive lift height and capacity, the KJL750E complements the power and performance of compatible TYM K75E compact tractors.

Lift height	122.6 in. / 3115 mm
Lift capacity	2072 lb / 940 kgf
Self leveling	Available



CAPACITIES & REACH	
Lift height	122.6 in. 3115 mm
Max. lift height under level bucket	114.3 in. 2902 mm
Clearance with bucket dumped	95.4 in. 2422 mm
Reach at maximum lift height	6.6 in. 168 mm
Max. dump angle	80°
Reach with bucket on ground	84.8 in. 2155 mm
Max. rollback angle	50°
Digging depth	5.1 in. 130 mm
Lift capacity	2072 lb 940 kgf
Breakout force at ground level, pivot points	2961 lb 1343 kgf
Bucket rollback force at ground line	3430 lb 1556 kgf
Self leveling	Available
Relief valve setting (Loader control valve)	2347 psi 165 kg/sq. cm

DIMENSIONS & WEIGHTS	
Overall height in carry position	65.7 in. 1670 mm
Depth of Attachment (to the back of the inner shell)	21.6 in. 549 mm
Height of Attachment	20.1 in. 510 mm
Length of Attachment (to pivot point)	26.2 in. 665 mm
Weight of boom & quick attach mechanism (1)	525 lb 238 kg
Weight of mounting frame (2)	187 lb 85 kg
Weight of bucket (3)	238 lb 108 kg
Loader total weight (1+2+3)	950 lb 431 kg
Lift cylinder	2.8x1.6 in. 60x40 mm
Bucket cylinder	2.8x1.6 in. 60x35 mm
Attachment used for specification	61.8 in. 1570 mm

CYCLE TIMES	
Boom raising time	4.5 sec
Boom lowering time	3.1 sec
Bucket rollback time	2.2 sec
Bucket dumping time	3.0 sec

COMPATIBLE BUCKET SIZES

TYM's multi-purpose buckets are capable of bulldozing, scraping, loading, metering, moving, and clamping material.

66" Front-End Loader bucket



Designed for your world

TYM creates tractors that bring together alluring form, advanced function and accessible value. Through Korean expertise in design, engineering and manufacturing, the company helps owners overcome every obstacle as they shape the world around them.

Headquartered in Korea with distribution across North America, Europe, and Asia, and assembly operations in the USA, TYM has been empowering customers for over 70 years.

www.tym.world