

K75

Compact Utility, Series 4
73.7 ps

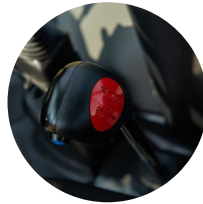


Packed with features to help accomplish your goals

The K75 features car-like comfort on top of its formidable performance specs. Equipped with a powerful 75 HP turbocharged engine and smart package, this Series 4 tractor touts serious premium features.



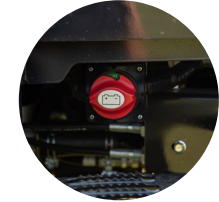
1. Power shuttle



2. De-clutch



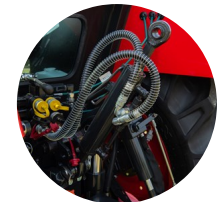
3. Electronic lift control



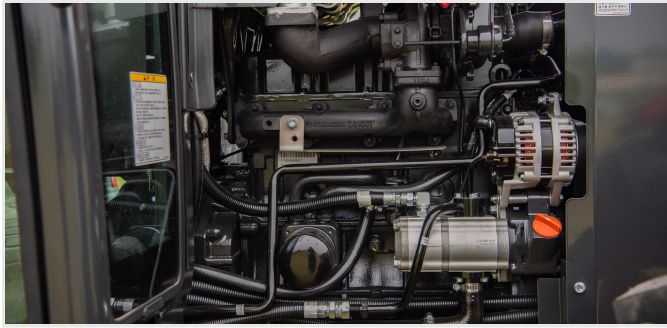
4. Battery shut-off switch



5. Rear external implement control



6. Hydraulic top link



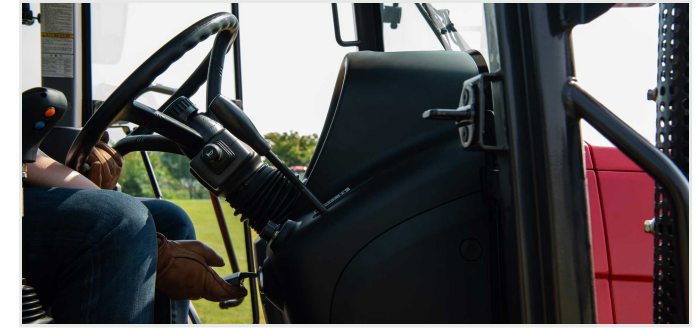
4-cylinder high-output TYM diesel engine

Equipped with a powerful 4-cylinder engine, the tractor maintains a compact size while boasting a similar output to a medium-sized tractor. The durable body and efficient engine combine to efficiently and productively accomplish tasks where a medium-sized tractor is needed. This eco-friendly engine meets Stage-V emissions standards.



High-capacity fuel tank

High-capacity fuel tanks allow long operating times without refueling and improves engine fuel efficiency.



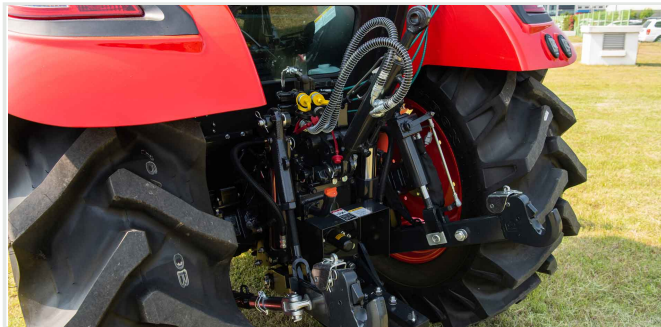
Tilt steering wheel

The tilt steering wheel allows the operator to adjust to their best driving position for greater comfort.



Multi-functional buttons

The PTO and the implement can be easily controlled with the multi-functional buttons. The operator can also control height, horizontal level, auto-level sensitivity, and Back-Up & Turn-Up functions.



High-capacity external hydraulic cylinder

A high-capacity external hydraulic cylinder usually found on utility tractors can exert up to 2 tons of lifting power.



Standard Smart Package

Equipped with an automotive start/stop button and Smart Key 1. Remote start/stop 2. Rear implement remote control 3. LED monitor 4. Rear-mounted camera

Technical specifications

| ENGINE | |
|--------------------------------|--------------------------|
| Engine manufacturer | TYM A2400TCI |
| Gross engine power | 73.7 ps |
| Type | Turbocharger |
| PTO power | 64.36 ps 48 kW |
| Rated engine speed | 2600 rpm |
| No. of cylinders | 4 |
| Displacement | 145.96 cu. in. 2392 cc |
| Air cleaner | Dry element |
| Alternator | 12V-70A |
| Fuel system | Direct Injection |
| POWERTRAIN | |
| Transmission type | Power Shuttle |
| No. of speeds | F16 x R16 |
| Max. traveling speed | 21.44 mph 34.51 km/h |
| Brakes | Wet Disc |
| Steering | Hydrostatic |
| Clutch | Wet Disc |
| CAPACITIES | |
| Fuel tank | 23.77 gal 90 L |
| Coolant | 9.08 qt 8.6 L |
| Crankcase | 6.76 qt 6.4 L |
| Transmission/Hydraulics system | 16.64 gal 63 L |
| Front axle | 14.7 qt 14 L |

| PTO | |
|---|-------------------------|
| PTO type | Independent |
| PTO control | Electric/Hydro |
| PTO rear | 540/750/1000 rpm |
| HYDRAULIC SYSTEM | |
| Pump type | Gear Pump |
| Implement flow | 12.3 gpm 46.8 lpm |
| Steering flow | 8.2 gpm 31.2 lpm |
| Total flow | 20.6 gpm 78 lpm |
| Category, 3-point hitch | Cat 2 |
| Hitch lift capacity | 5344 lb 2424 kg |
| Hitch lift capacity at 24 inches behind link ends | 4144.69 lb 1880 kg |
| Lift control type | Position/Draft/TBS |
| No. of standard remote valves | 6 |
| DIMENSIONS & WEIGHTS | |
| Overall length with 3-point hitch | 151.57 in. 3850 mm |
| Overall width | 74.40 in. 1890 mm |
| Wheelbase | 86.6 in. 2200 mm |
| Height to top of ROPS | 106.88 in. 2715 mm |
| Min. ground clearance | 16.9 in. 430 mm |
| Min. turn radius with brakes | 142.12 in. 3610 mm |
| Min. turn radius without brakes | 161.81 in. 4110 mm |
| Track width | F: 1520 mm / R: 1450 mm |
| Weight with cab | 6481.6 lb 2940 kg |
| STANDARD TIRES | |
| Agricultural - Front | 11.2 - 24 |
| Agricultural - Rear | 16.9 - 30 |

KJL75 Front-End Loader

Attachments

The TYM KJL75 front-end loader raises the bar in material handling and productivity. Providing an impressive lift height and capacity, the KJL75 complements the power and performance of compatible TYM K75 compact tractors.

| | |
|---------------|---------------------|
| Lift height | 122.6 in. / 3115 mm |
| Lift capacity | 2072 lb / 940 kgf |
| Self leveling | Available |



| CAPACITIES & REACH | |
|--|--------------------------|
| Lift height | 122.6 in. 3115 mm |
| Max. lift height under level bucket | 114.3 in. 2902 mm |
| Clearance with bucket dumped | 95.4 in. 2422 mm |
| Reach at maximum lift height | 6.6 in. 168 mm |
| Max. dump angle | 80° |
| Reach with bucket on ground | 84.8 in. 2155 mm |
| Max. rollback angle | 50° |
| Digging depth | 5.1 in. 130 mm |
| Lift capacity | 2072 lb 940 kgf |
| Breakout force at ground level, pivot points | 2961 lb 1343 kgf |
| Bucket rollback force at ground line | 3430 lb 1556 kgf |
| Self leveling | Available |
| Relief valve setting (Loader control valve) | 2347 psi 165 kg/sq. cm |

| DIMENSIONS & WEIGHTS | |
|--|-----------------------|
| Overall height in carry position | 65.7 in. 1670 mm |
| Depth of Attachment (to the back of the inner shell) | 21.6 in. 549 mm |
| Height of Attachment | 20.1 in. 510 mm |
| Length of Attachment (to pivot point) | 26.2 in. 665 mm |
| Weight of boom & quick attach mechanism (1) | 525 lb 238 kg |
| Weight of mounting frame (2) | 187 lb 85 kg |
| Weight of bucket (3) | 238 lb 108 kg |
| Loader total weight (1+2+3) | 950 lb 431 kg |
| Lift cylinder | 2.8x1.6 in. 60x40 m |
| Bucket cylinder | 2.8x1.6 in. 60x35 m |
| Attachment used for specification | 61.8 in. 1570 mm |

| CYCLE TIMES | |
|----------------------|---------|
| Boom raising time | 4.5 sec |
| Boom lowering time | 3.1 sec |
| Bucket rollback time | 2.2 sec |
| Bucket dumping time | 3.0 sec |

COMPATIBLE BUCKET SIZES

TYM's multi-purpose buckets are capable of bulldozing, scraping, loading, metering, moving, and clamping material.

66" Front-End Loader bucket



Designed for your world

TYM creates tractors that bring together alluring form, advanced function and accessible value. Through Korean expertise in design, engineering and manufacturing, the company helps owners overcome every obstacle as they shape the world around them.

Headquartered in Korea with distribution across North America, Europe, and Asia, and assembly operations in the USA, TYM has been empowering customers for over 70 years.

www.tym.world